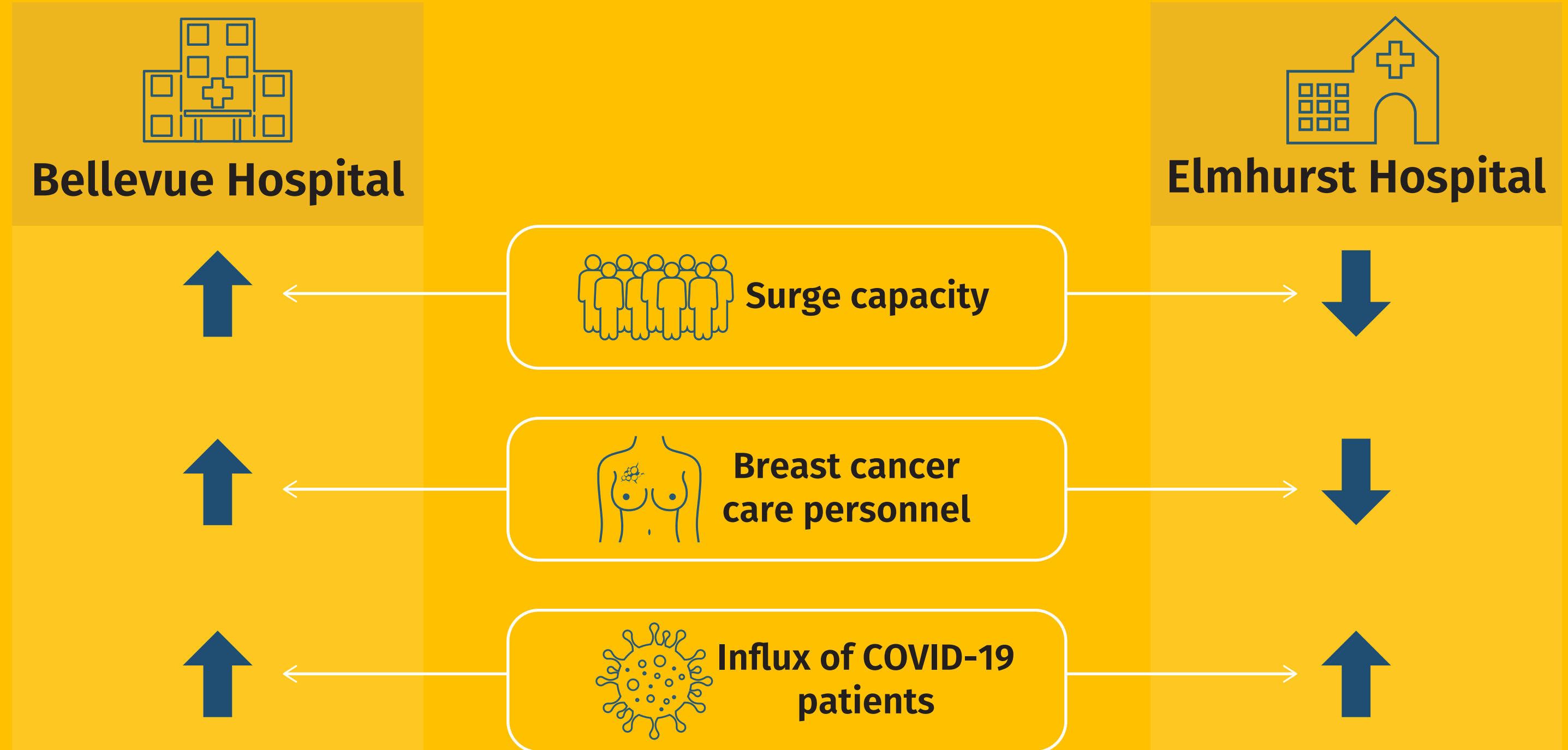
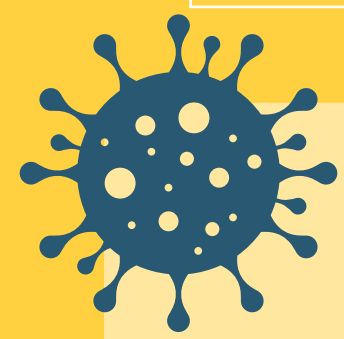


One Devastating Impact of COVID-19: Breast Cancer Care for the Underserved

Experiences at two public hospitals in New York



With good surge capacity and resources from New York University, Bellevue was able to continue its breast cancer services at a lower capacity, but the smaller Elmhurst had to shut down that service



How has the diversion of resources to COVID-19 care impacted breast cancer patients?



Appropriate resource allocation is key to helping smaller public hospitals provide critical care to the medically underserved for conditions other than COVID-19

Escobar *et al.* (2020)

The Devastating Impact of the COVID-19 Pandemic on Breast Cancer Care Among Medically Underserved Populations at Two New York City Public Hospitals

DOI: 10.1097/AS9.000000000000018

ANNALS OF SURGERY OPEN
Perspectives on Surgical History, Education, and Clinical Approaches